



# Year 7

## Essential

### Information Evening

COMPASSION  
ACHIEVEMENT  
RESPECT  
ENDEAVOUR

The cornerstones of our  
learning community



IMBERHORNE SCHOOL

# Speakers

- **Mr Martin Brown**  
Headteacher
- **Mr Alex Melmoe**  
Network Manager
- **Mrs Heather Timson**  
Assistant Headteacher
- **Mr Greg Friend**  
Head of Year



# High Expectations

- Personal organisation, independence and good habits – Homework/Challenge fortnights

23.9.19	English
7.10.19	Technology
21.10.19	Art
11.11.19	Maths
9.12.19	History
13.1.20	Computing
27.1.20	MFL
10.2.20	PE
2.3.20	Drama
9.3.20	Science



# Character Education

- Development of character – important part of students journey through school
  - Empathy and Resilience
  - Collaboration and Communication
  - Creativity and Critical Thinking
- Y7 Team building days
- School reports
- Wider Participation – clubs and activities



# Supporting the school

- Attendance at events and activities
- Liaising with us
- School fund




# Independent Learning

- Remote Access
  - Full access to school system – all files & software
- Foldr
  - Access to school files
- Outlook Web Access
  - Calendar and E-Mail
- ActiveSync
  - Calendar and E-mail on Mobile Devices





Browser tabs: <http://www.imberhorne.co.uk/>, IMBERHORNE intranet, vSphere Web Client, Welcome to ParentPa..., Welcome to Imber...



# IMBERHORNE SCHOOL

Compassion  
Achievement  
Respect  
Endeavour  
*The cornerstones of our learning community*

- Home
- About Us
- Dates
- News
- Parents
- Students**
- Our Curriculum
- Sixth Form
- Recruitment
- Contact Us




- Canteen
- Careers and Futures Guidance
- Clubs and Activities
- Duke of Edinburgh Award
- eSafety Advice
- Library and Learning Resource Centre
- Online Services**
- Personal Support
- Revision
- Reward and Recognition
- Work Experience

### Who Broke the Sports Day Records in 2019?

<http://www.imberhorne.co.uk/online-services>

### September 2019




**OPEN EVENING**  
Thursday 26th September

Week  
**3A**  
16th - 20th

### The Week Ahead







### Outlook Web Access


Gives access to your e-mail, calendar and contacts - faster than logging into Remote Access if you only need to check one of these.

Students can find their homework and timetable in their calendar.

**Login Details to Use:** Normal school network username and password.

**Targeted Users:** Staff  
Students  
Governors

[Login to Outlook Web Access](#)



### Office 365

Gives access to online versions of Office programs and documents stored on OneDrive. Also allows staff and students to download a free copy of Office365 ProPlus to install on their own computers.

**Login Details to Use:**  
School e-mail address and normal school network password. School e-mail addresses are your normal network username followed by @imberhorne.co.uk, i.e. [012345@imberhorne.co.uk](#) for students or [aother@imberhorne.co.uk](#) for staff.

**Targeted Users:** Staff  
Students

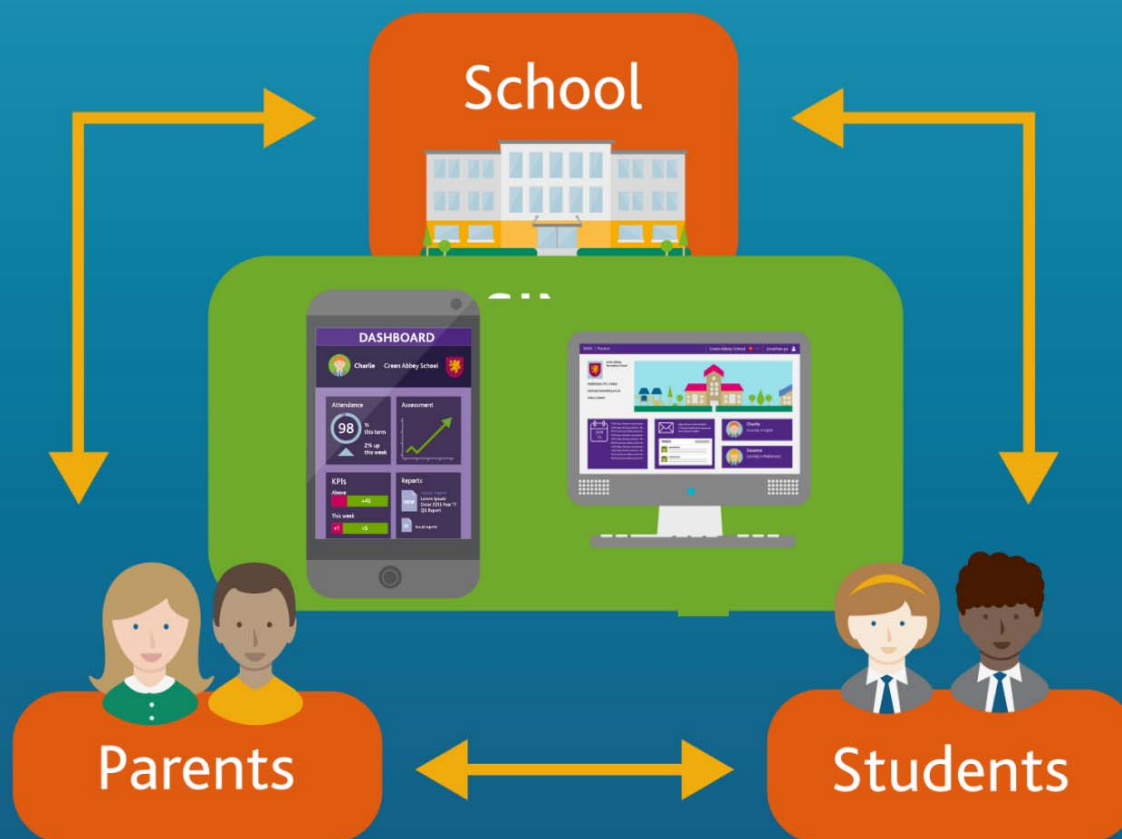
[Login to Office 365](#)





# SIMS Parent

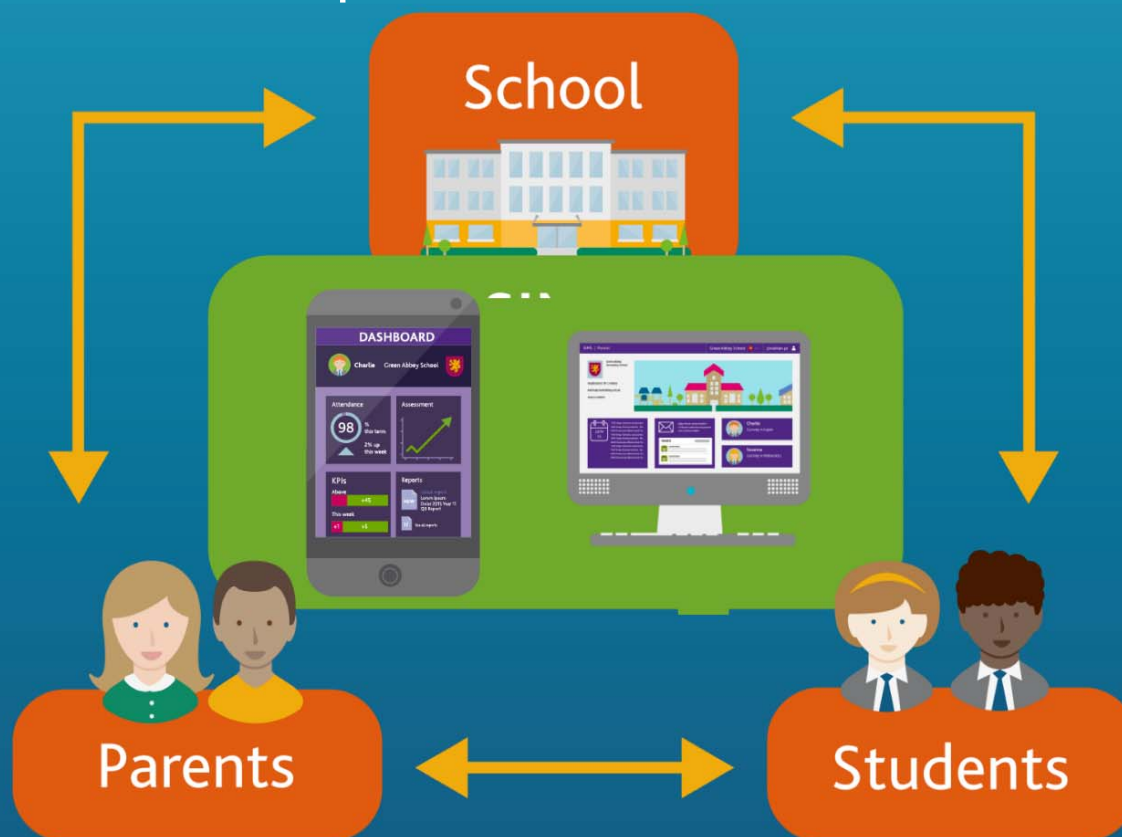
View Homework, Achievements,  
Behaviour, Attendance & more



IMBERHORNE SCHOOL

# SIMS Parent

Complete “Data Collection” section  
To check/update Contact Details



Browser window showing the SIMS Parent portal for Imberhorne School.

URL: <https://www.sims-parent.co.uk/#/sch>

Product Admin | SIMS Parent

SIMS | Parent | Imberhorne School | Sign Out

Navigation menu:

- Home
- School Details
- Messages
- Calendar
- Ben

Dashboard Widgets:

- Attendance:** 100% this term, 3 / 3 this week
- Conduct Achievements:** 9, 1 this week, Behaviour: No incidents this year
- Assessment:** Star icon
- Homework:** 3 pieces set
- Timetable:** Calendar icon
- Reports:** No data available

Task List:

Due: ☐ Handed In Refresh

Today: 19th September 2017

**Art - Take 12 photographs**  
Set by Mrs A P HAYDEN on 12th September 2017

Thursday: 5th October 2017

**Geography - Young Geographer of the y...**  
Set by Mrs C E HEALEY on 18th September 2017

Friday: 13th October 2017

**Technology - INDEPENDENT LEARNING...**  
Set by Ms C A JORDAN on 13th September 2017

Privacy Policy | 100%



# Use the free SIMS Parent App or view online



IMBERHORNE SCHOOL

We sent you an  
activation e-mail  
earlier today

Click the link in the  
e-mail  
to activate



IMBERHORNE SCHOOL

# Sign in with an existing account



Register your account for SIMS products



Sign in with SIMS ID



Sign in with Facebook



Sign in with Twitter



Sign in with Google



Sign in with Microsoft



Sign in with Office 365



IMBERHORNE SCHOOL

# If you don't have any of these, you'll need to create one



Register your account for SIMS products



Sign in with SIMS ID



Sign in with Facebook



Sign in with Twitter



Sign in with Google



Sign in with Microsoft



Sign in with Office 365



IMBERHORNE SCHOOL



# Ignore the SIMS ID Option:



Register your account for SIMS products



Sign in with Facebook



Sign in with Twitter



Sign in with Google



Sign in with Microsoft

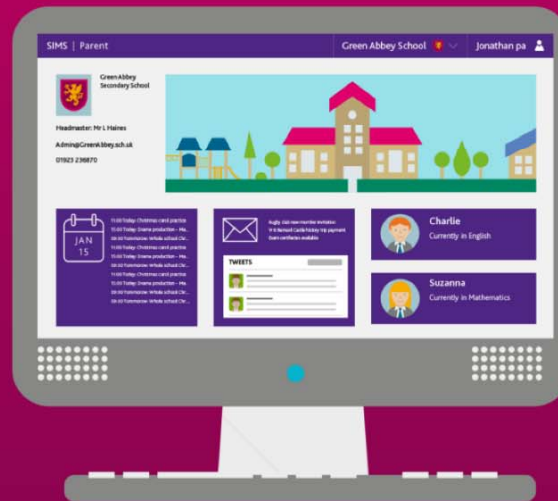


Sign in with Office 365



IMBERHORNE SCHOOL

See a snapshot  
of school life



IMBERHORNE SCHOOL

# Assessment & Reporting

- At Imberhorne, we use a 'Flight Paths' approach to assessment at KS3
- This means that our focus as teachers is on the long-term goal of preparing students for success at GCSE and beyond
- Students in Year 7 will be placed on one of four flight paths for each subject
- This is based on the data the school holds on each student and helps us identify their likely future attainment



# Flight Paths

- In the first term, departments will complete a number of assessments to ensure students have been placed on the correct Flight Path for each subject.
- Marking in books would be on the basis of the arrows.
  - ✓ Above their Flight Path expectation: ↑
  - ✓ On their Flight Path expectation: ↔
  - ✓ Under their Flight Path expectation: ↓



# Flight Paths

- In December we will send you a letter which will explain the system in more detail and confirm the Flight Path for each student in each subject.
- Departments will continue to monitor the students' progress and move the students between Flight Paths where applicable across KS3.
- (Report schedule for the year)

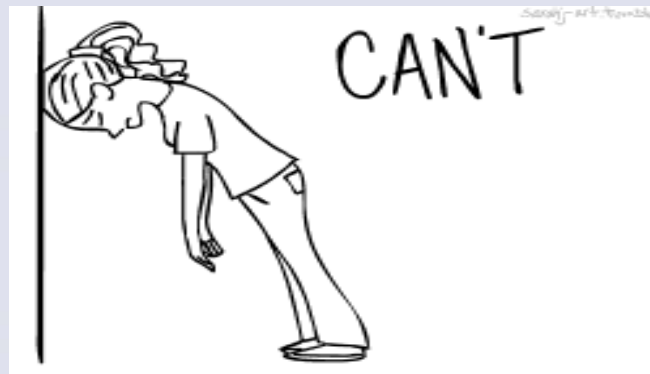


# Attitudes to Learning

- Learning Attitudes
- Quality of Work
- Working Independently
- Feedback in reports/SIMs online



# Unacceptable





# Coasting



# Motivated



IMBERHORNE SCHOOL

# Outstanding



IMBERHORNE SCHOOL

## Outstanding

Praise e-mails, Imberstar nomination for sustained performance.

### Learning Attitudes

- Shows a high level of **dedication and enthusiasm** in lessons.
- Willingly seeks 'next steps', takes risks to further their learning.
- Takes a major part in lessons and is a **good role model**
- Can take the lead for his/her own learning and give **support to others**.
- **Consistently on task**.
- Never needs to be reminded about expectations.

### Quality of Work

- **Dedicated** and strives to produce work which is over and above what is expected.
- **Works hard** to produce work and completes tasks to a high standard.
- Consistently makes very **good progress**.

### Working Independently

- Consistently produces homework of a standard above what is expected of them.
- **Seeks to further knowledge of topics** by participating in additional research.





## Be Ready

- Arrive at lessons on time
- Have all the equipment you need to learn
- Maintain a positive attitude to learning



## Show Respect

- Be polite and kind in your interactions with others, respecting them and their property
- Move around our school safely and sensibly



## Have Pride

- Wear our school uniform correctly
- Be a good role model for our school
- Look after our school eg. Don't drop litter



IMBERHORNE SCHOOL



IMBERHORNE SCHOOL

# Homework Club

- Lunchtimes

Tuesday  
and  
Thursday

- Afterschool

Thursday



# Pastoral Support

- Head of Year & Pastoral Support

Form tutor is the first point of contact. They should have emailed you, but if not, this will be sent out by the end of next week.

- Rewards & Celebration

Merits, Praise Emails and Imberstar! Merit assembly on 5<sup>th</sup> and 6<sup>th</sup> November

- Communication





# Recognition – at Imberhorne we praise EFFORT

- Students collect **Achievement Points** for demonstrating praiseworthy activities and earn certificates
- Merit = 1 Achievement Point
- Praise e-mail = 3 Achievement Points
- Imberstar subject nomination (every half term) = 5 Achievement Points
- All information can be found on Sims Parent



Stephen Smith is in Year 7 and has 90% attendance.

Is that good?

What does this mean?

- 1 week =  $\frac{1}{2}$  a day missed a week (5 lessons a fortnight!)
- 1 year = 4 weeks of lessons (100 lessons!)
- 5 years =  $\frac{1}{2}$  a school year



# What impact might this have on Stephen's life.....?

Research suggests that

**17 missed school days** in a  
year = 1 GCSE grade **DROP** in  
achievement. (DfE)

The greater the attendance –  
the greater the achievement



Attendance	5 or more A*-C including English and Maths 2015	5 or more A*-C including English and Maths 2016	5 or more 4+ including English and Maths 2017	5 or more 4+ including English and Maths <b>2018</b>
95%+	80%	86%	80%	78%
90% - 94.9%	51%	68%	44%	65%
Less than 90%	14%	24%	25%	8%



# Key Dates

- **Thursday 26<sup>th</sup> September 2019:** Open Evening (2.30pm finish)
- **Friday 27<sup>th</sup> September 2019:** Inset day
- **Wednesday 2<sup>nd</sup>, Thursday 3<sup>rd</sup> and Friday 4<sup>th</sup> October:** Trans*formation* days
- **Tuesday 5<sup>th</sup> & Wednesday 6<sup>th</sup> November 2019:**  
Year 7 Merit Assembly 9.00 AM start
- **Thursday 21<sup>th</sup> November 2019:**  
Year 7 Consultation ( Form Tutors )
- **Week beginning 16<sup>th</sup> December 2019:** Flight Path Allocation
- **Friday 28<sup>th</sup> February 2020:** Progress Reports 1
- **Friday 15<sup>th</sup> May 2020:** Progress Reports 2
- **Thursday 21<sup>st</sup> May 2020:**  
Year 7 Consultation 3.30 – 7.30pm ( early finish 2.30pm)

