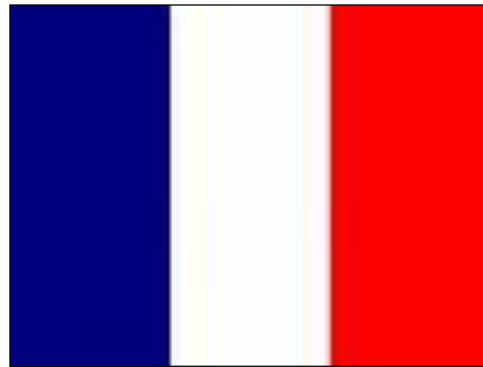


La Grande Découverte

(The Great Discovery)



Parents' Briefing June 2018

Which trip is my child going on?

- TRIP 1 – 8Q & 8U
27th June – 29th June
- TRIP 2 – 8R, 8S, 8V, 8X
2nd July – 4th July
- TRIP 3 8T, 8W, 8Y
4th July – 6th July



Itinerary – Day 1

- Treasure hunt and souvenir shopping in Boulogne's historic Old Town
- Packed lunch in the park
- Visit to Naausica Aquarium
- Check in to hotel and dinner
- Team building activities and free recreation time!



Itinerary – Day 2



- Visit WW1 cemetery in Etaples
- Picnic challenge in Etaples/Le Touquet
- Picnic
- Visit the Musée de l'Abeille
- Dinner



Itinerary – Day 3

- Visit Boulangerie “Le Fournil”
- Picnic lunch
- Visit to Snail Farm with tastings for the brave!



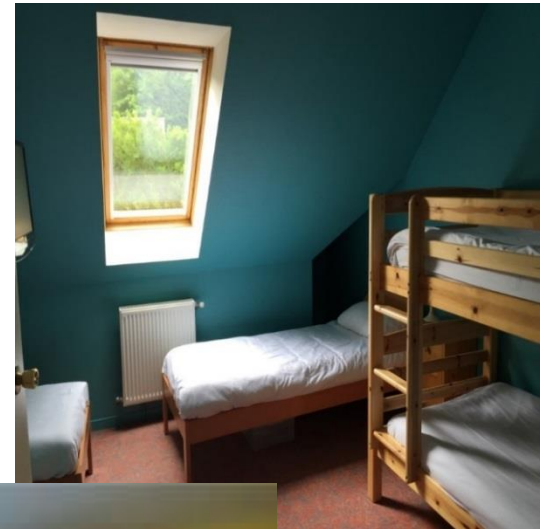
Essential Timings

- **Trip 1** Students arrive at school at **06.15** Coaches leave at 06.30
Coaches will leave and arrive back at Imberhorne Lane (upper)
 - **Trip 2** Students arrive at school at **06.15** Coaches leave at 06.30
Coaches will leave and arrive back at Windmill Lane (lower)
 - **Trip 3** Students arrive at school at **06.15** Coaches leaves at 06.30
Coaches will leave and arrive back at Imberhorne Lane (upper school)
Coaches will leave promptly and we cannot wait for latecomers!
-
- **Trip 1** will arrive back at approx **18.00 (upper)**
 - **Trip 2** will arrive back at approx **18.30 (lower)**
 - **Trip 3** will arrive back at approx **18.00 (upper)**
 - **Keep an eye on our FB site! (No FB account necessary) We will update here if there are any significant delays**



The Hotels

- All rooms are en-suite and have a variety of 4, 5 or 6 beds
- Rooms are shared with friends
- Breakfast and evening meals will be eaten in the hotel restaurants
- Facilities include open space for the students to play
- Both venues are very safe for students, in a rural location, with a secure perimeter



What to pack in your LGD day bag

- A bottle of water that can be refilled
- Packed lunch
- Sunscreen (high factor!)
- Light waterproof jacket
- Pen and pencil
- Camera
- Spending money for the first day (must be in euros!)
- **Students must wear a watch!**

On the coach we will hand out:

- Grande Découverte activity booklets



What to pack in your suitcase

- Clothing that is suitable for varied weather
- Hoodie or jumper
- **Towel** and shower gel / soap
- Toothbrush, toothpaste etc.
- Spending money, divided into envelopes for Day 2 and Day 3 (must be in euros!)
- Some healthy snacks e.g. cereal bars, dried fruit

Please also ensure that your child is wearing comfortable and practical footwear as the trip is very active!



Spending Money

- Spending money for the first day packed in the day bag (must be in euros!)
- The rest of the spending money should be packed in the suitcase and divided into envelopes for Day 2 and Day 3 (must be in euros!)
- There are limited opportunities to spend money so we suggest a maximum of 30 Euros

Please do not pack the following:

- Unchanged currency - there will be no opportunity to change £££ to Euros while on the trip
- **Mobile phones**
- I-pod, handheld consoles, other personal electronic devices
- Sweets
- Juice or fizzy drinks
- Aerosol deodorants – roll-on deodorants are fine but sprays can trigger asthma attacks in some students and are unsafe in high temperatures



Medication and dietary requirements

- The medical form must be up to date so if anything changes between now and the trip, please contact us!
- Medication should be in a bag, and all items must be clearly labelled with your child's name
- All medication (even if non-prescription) must be handed to a member of staff when loading the coach
- All dietary requirements must be stated on the medical form
- If your child is vegetarian or vegan, please state this clearly on the medical form and make clear whether or not they eat fish / dairy
- The more information we have, the better!



Learning and Behaviour

- Curriculum links and the activity booklet
- Shopping in the Old Town
- Behaviour expectations
- Rules for night time



Photos and Updates

- Any suitable photographs will be posted on the school Facebook account AFTER all three trips have returned home.
- Many activities are in a semi-rural location and we do not have WIFI access.
- Please keep an eye on the school facebook page (no account necessary) for updates to return times for each trip.



In case of emergency, first contact the school

Out of hours only

For Trip 1 Mr Conroy can be contacted on 07833 209 458

For Trip 2 and 3 Mrs Timson can be contacted on 07833 209 458

Merci beaucoup!

