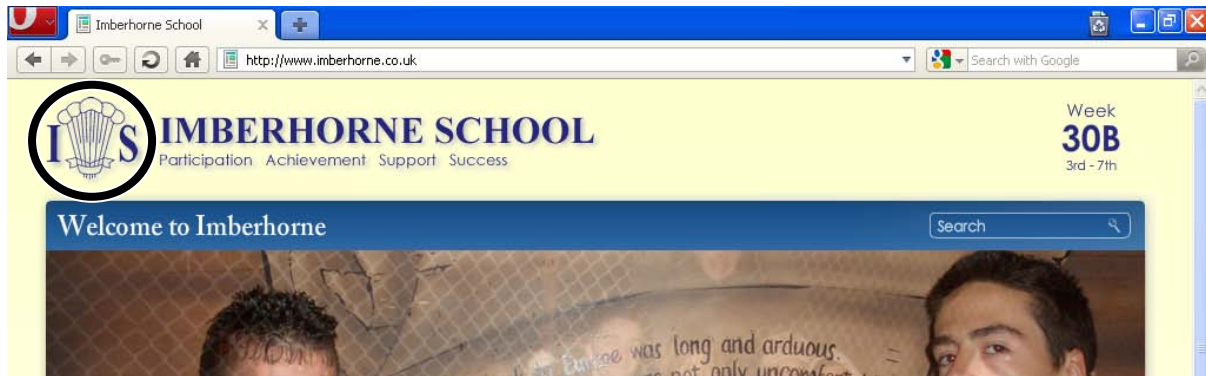


## Connecting to Imberhorne Remote Access:

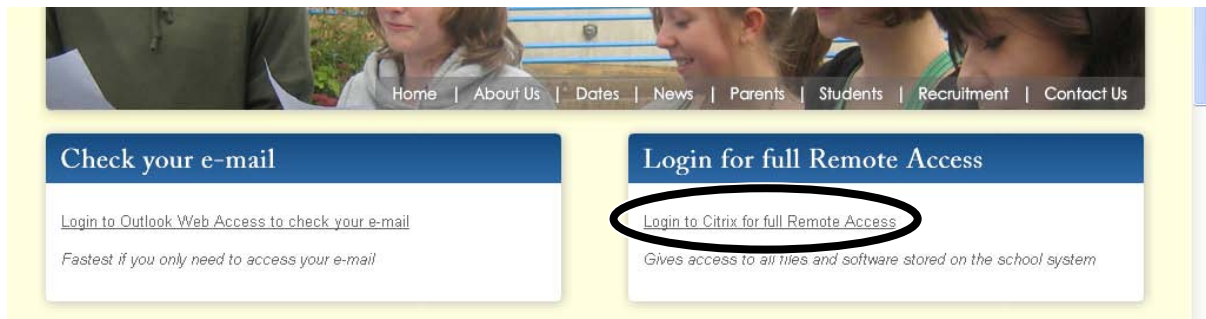
# Opera 10.5 on Windows XP



- 1) Visit the Imberhorne website at [www.imberhorne.co.uk](http://www.imberhorne.co.uk) and click the school logo at the top of the page (or choose "Students", then "Remote Access" on the menu system):



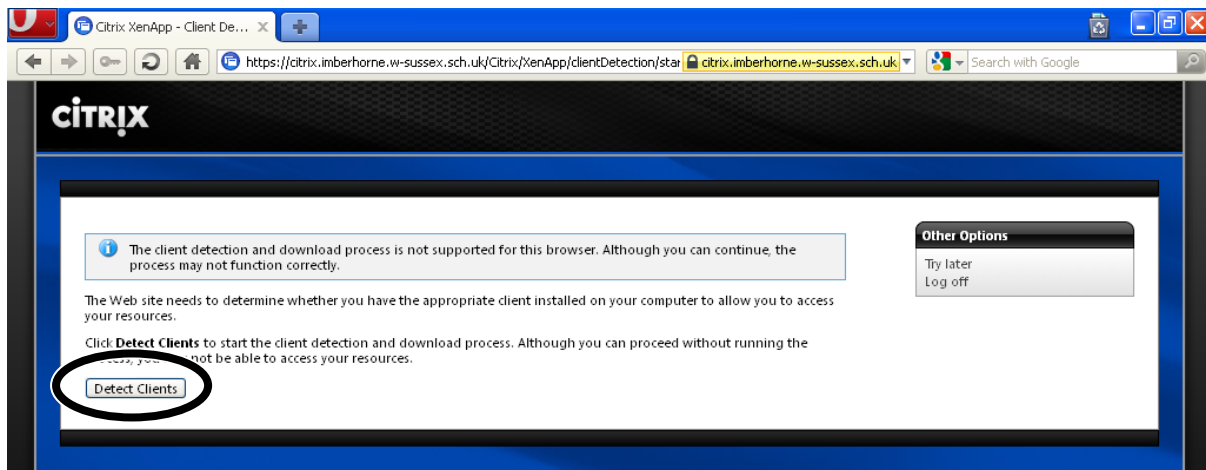
- 2) Click the "Login to Citrix for full Remote Access" link in the right-hand box:



- 3) Enter your school username and password in the "user name" and "password" boxes, then click "Log On":



- 4) Click "Detect Clients":

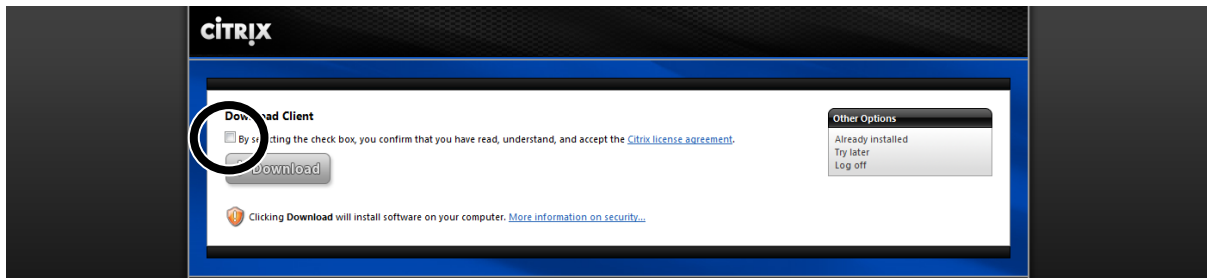


Continued...

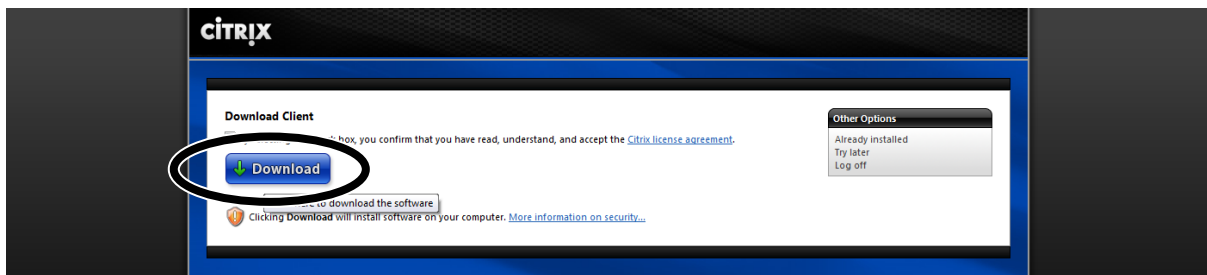
# Connecting to Imberhorne Remote Access: Opera 10.5 on Windows XP



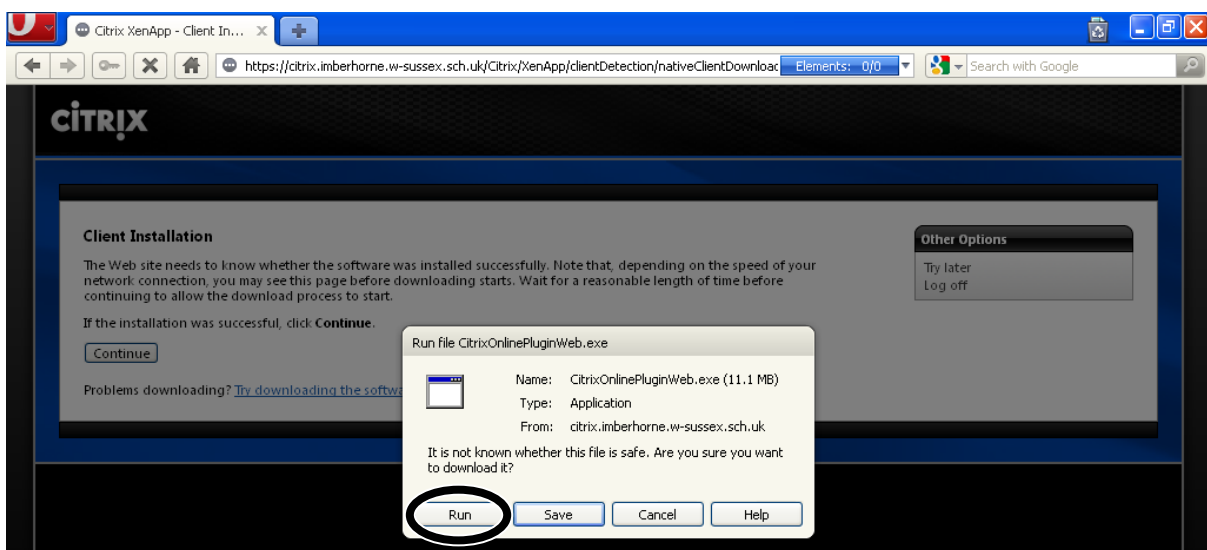
5) Tick the box next to “By selecting the check box...”:



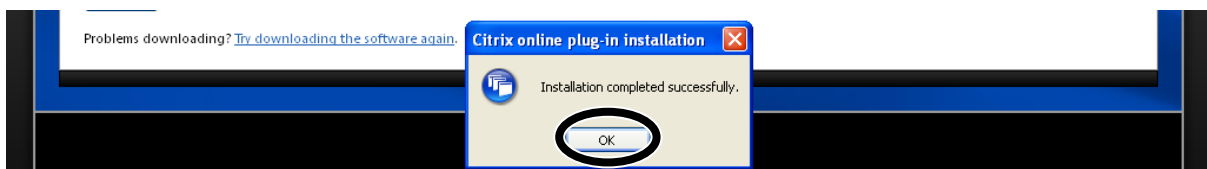
6) Click the “Download” button:



7) Click “Run”:



8) Once installed, click “OK”:

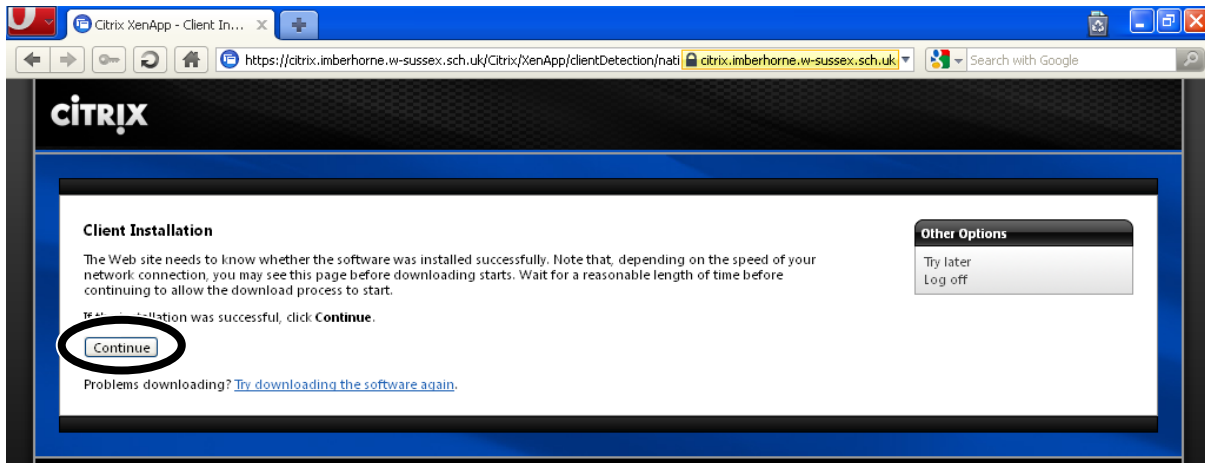


Continued...

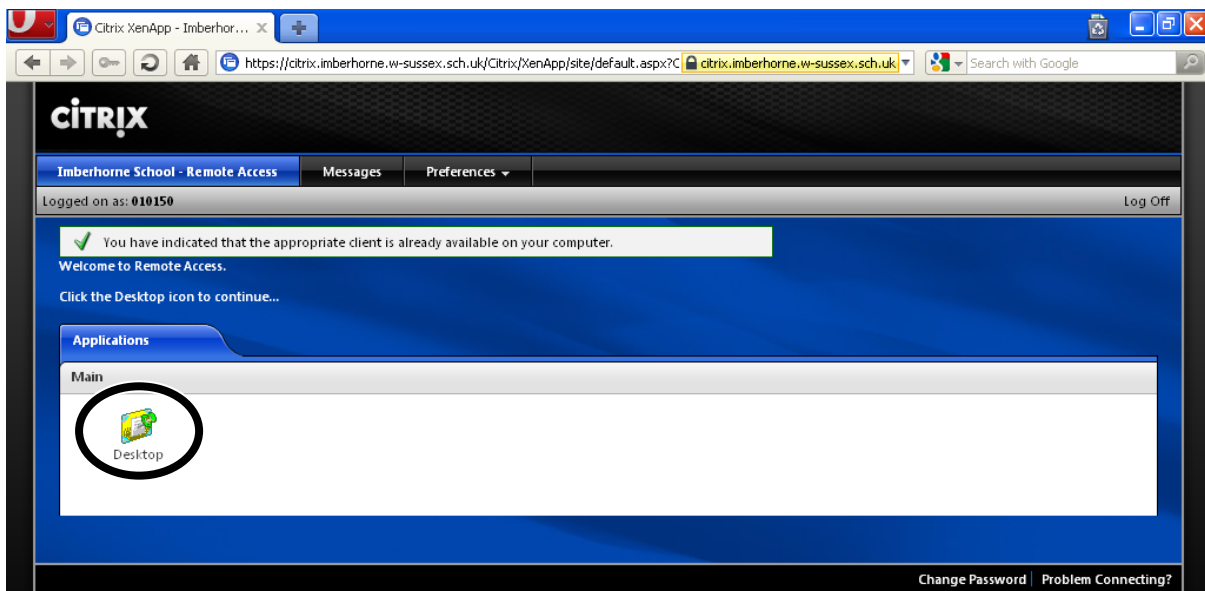
# Connecting to Imberhorne Remote Access: Opera 10.5 on Windows XP



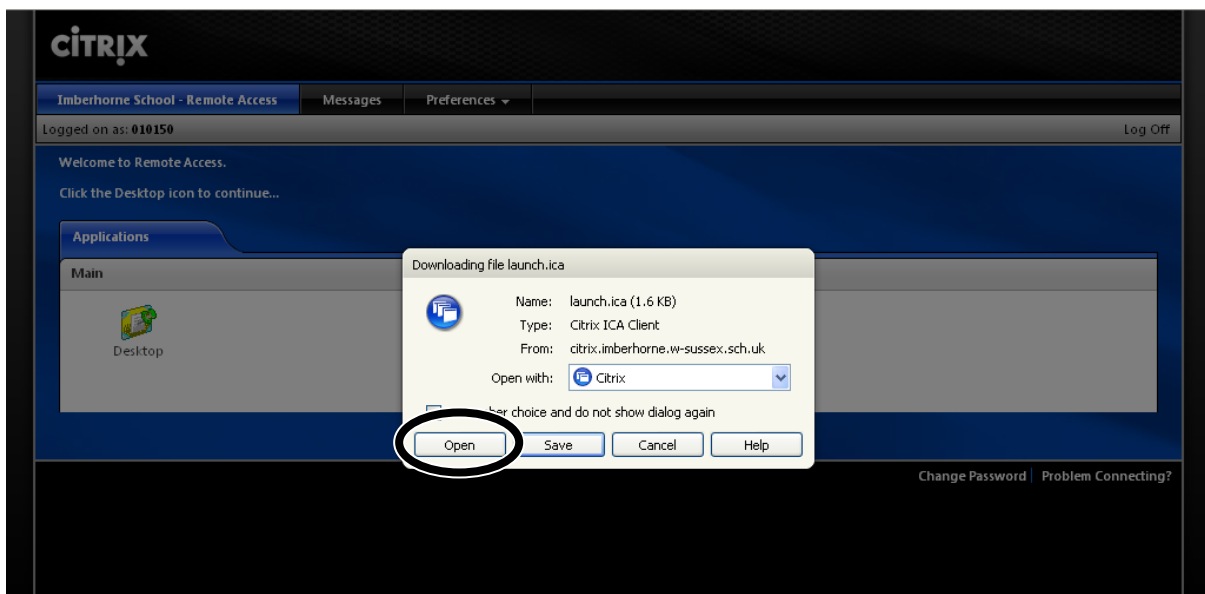
9) Click "Continue":



10) Click the "Desktop" icon:

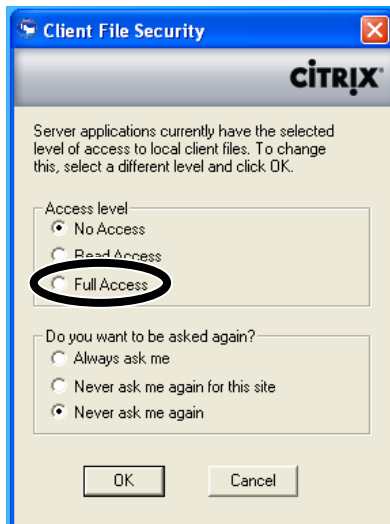


11) Click "Open":



## Opera 10.5 on Windows XP

- 12) Your computer screen will disappear and you will be logged into the school network. Don't panic – this is what is meant to happen! ☺
- 13) You will be warned that “a server application is requesting access to your local client files”. To see files on your home computer when logged into Remote Access you need to choose “Full access”, decide whether you want to be asked this question again, then click “OK”:



Please note that you will still be able to run programs from school if you choose “No Access” – you just won't be able to see files on your home computer.

- 14) You are now connected to school! The next time you logon, you will skip from step 3 to step 10 – you only need to install the software once.