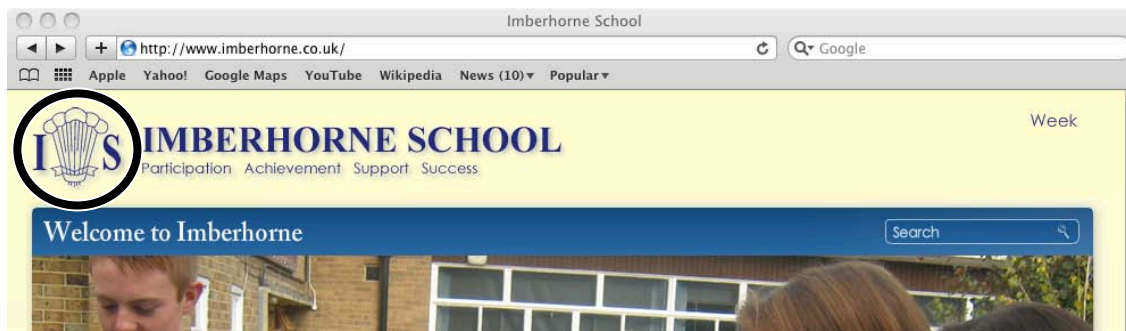


Connecting to Imberhorne Remote Access:

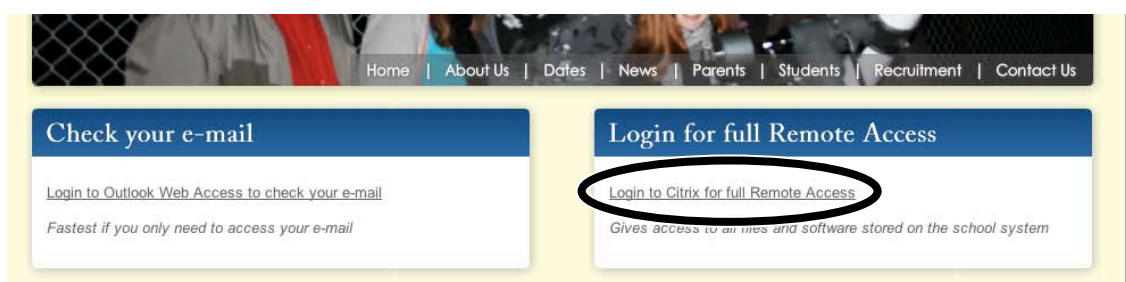
Safari 4 on Mac OS X



- 1) Visit the Imberhorne website at www.imberhorne.co.uk and click the school logo at the top of the page (or choose "Students", then "Remote Access" on the menu system):



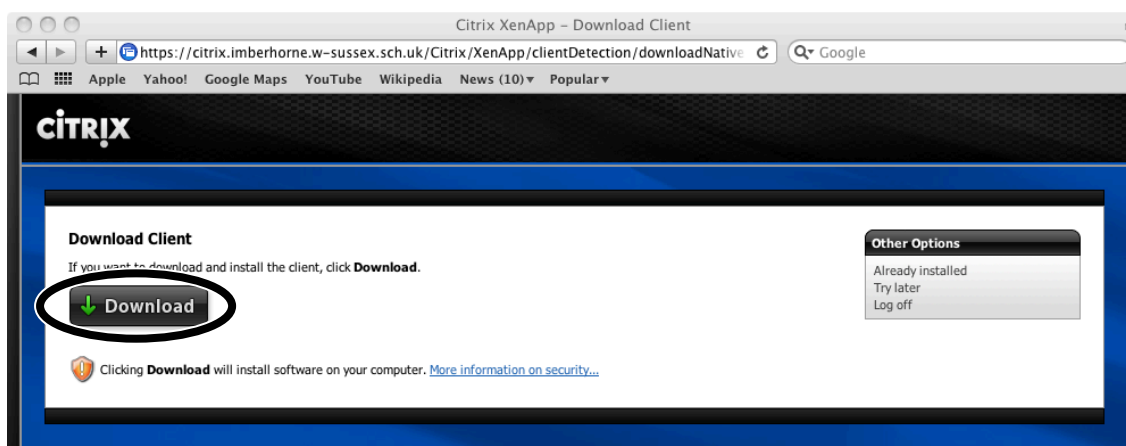
- 2) Click the "Login to Citrix for full Remote Access" link in the right-hand box:



- 3) Enter your school username and password in the "user name" and "password" boxes, then click "Log On":



- 4) Click the "Download" button:

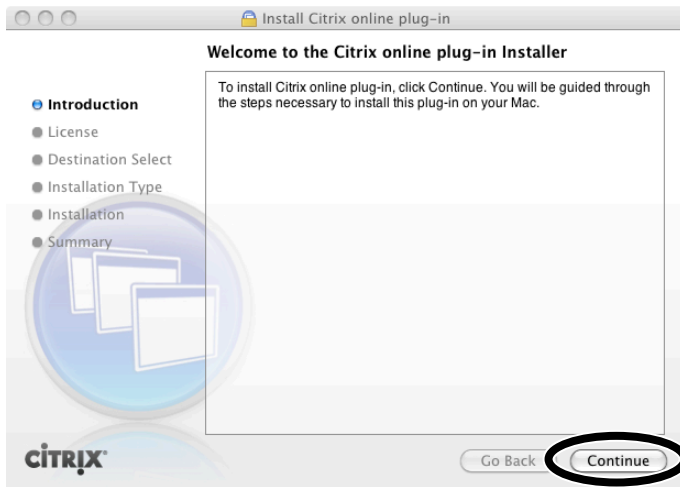


Continued...

Connecting to Imberhorne Remote Access: Safari 4 on Mac OS X



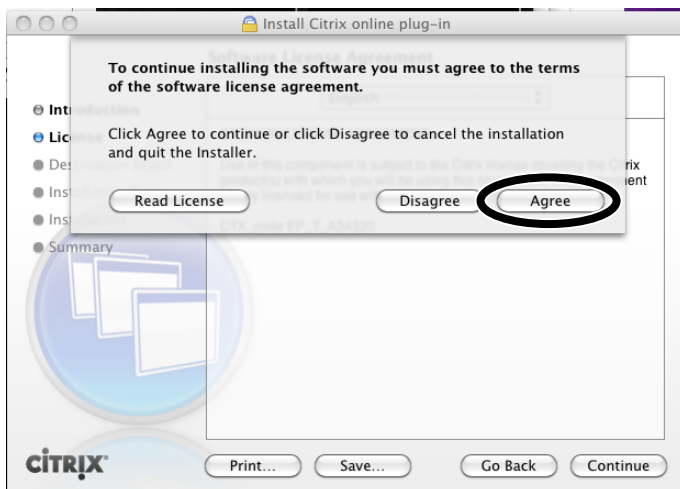
5) Click "Continue":



6) Click "Continue":



7) Click "Agree":



Continued...

Connecting to Imberhorne Remote Access: Safari 4 on Mac OS X



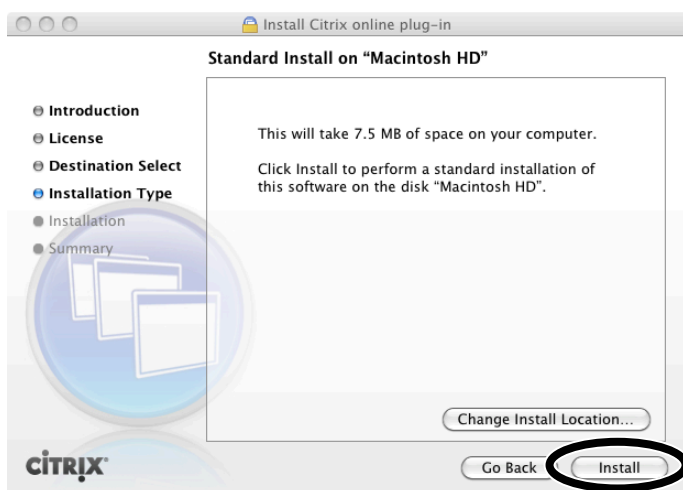
8) Click "Macintosh HD":



9) Click "Continue":



10) Click "Install":



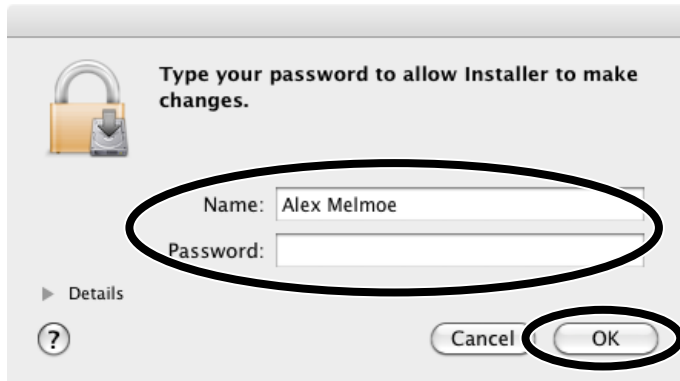
Continued...

Connecting to Imberhorne Remote Access:

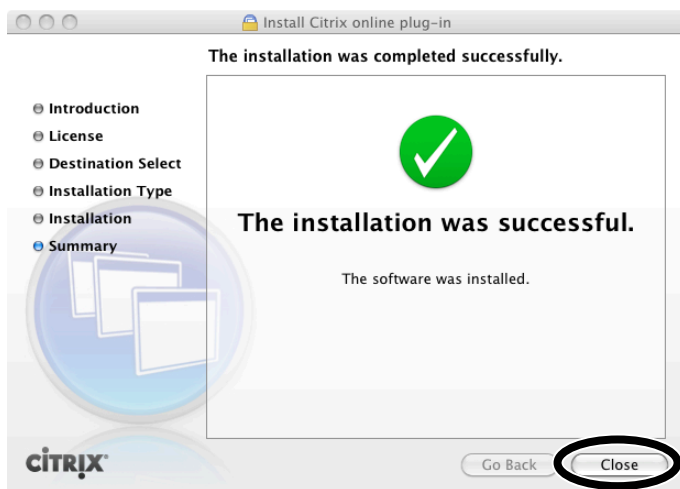
Safari 4 on Mac OS X



11) Enter your **Mac** username and password, and click "OK":



12) Click "Close":



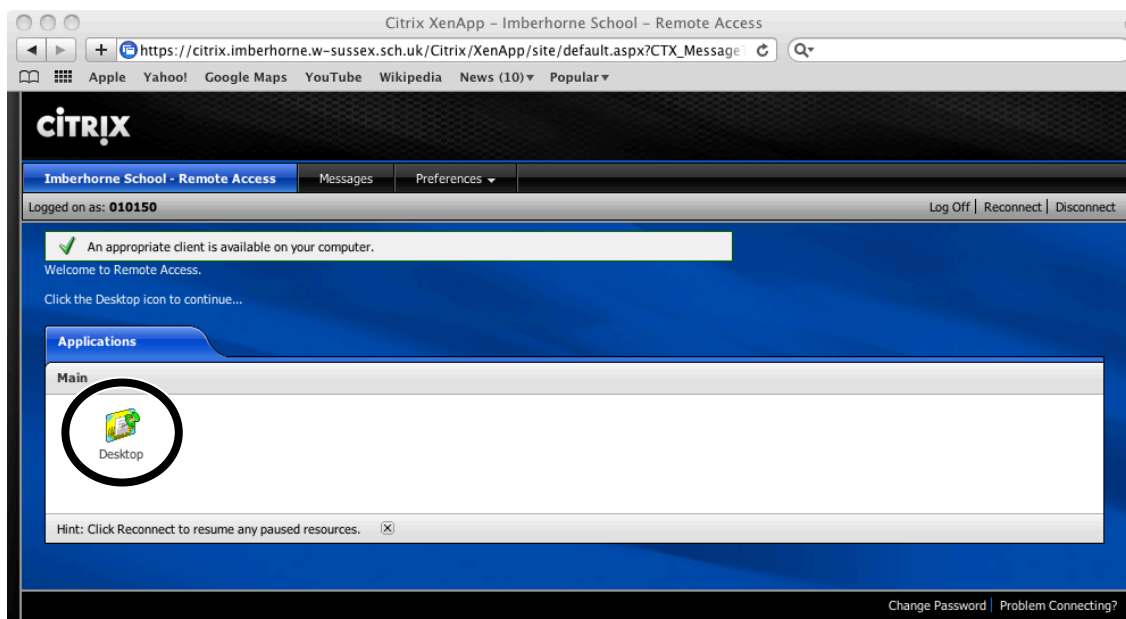
13) Close this window:



Continued...

Safari 4 on Mac OS X

14) Click the "Desktop" icon:



15) Click "Open":



16) Your computer screen will disappear and you will be logged into the school network. Don't panic – this is what is meant to happen! 😊

17) You are now connected to school! The next time you logon, you will skip from step 3 to step 14 – you only need to install the software once.