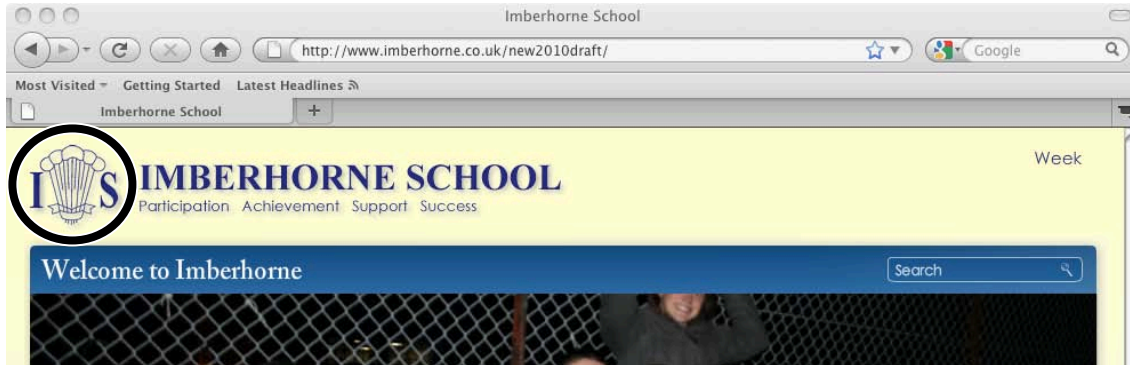


## Connecting to Imberhorne Remote Access:

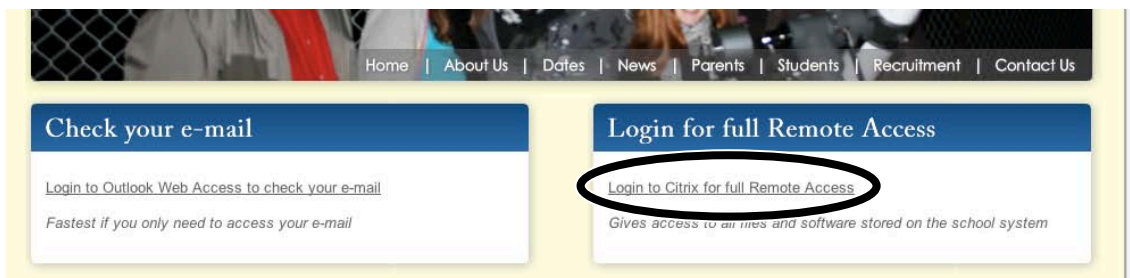
# Firefox 3.6 on Mac OS X



- 1) Visit the Imberhorne website at [www.imberhorne.co.uk](http://www.imberhorne.co.uk) and click the school logo at the top of the page (or choose "Students", then "Remote Access" on the menu system):



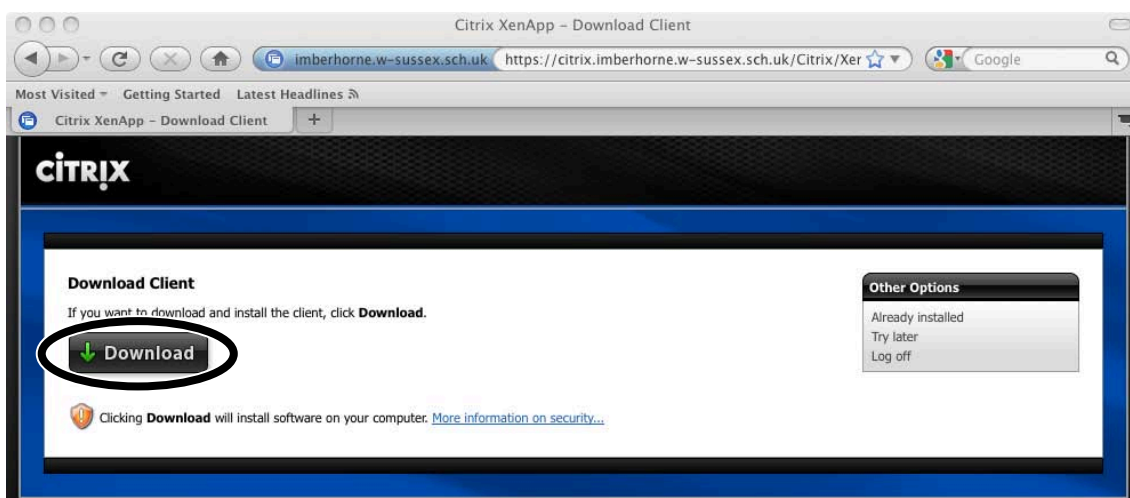
- 2) Click the "Login to Citrix for full Remote Access" link in the right-hand box:



- 3) Enter your school username and password in the "user name" and "password" boxes, then click "Log On":



- 4) Click the "Download" button:

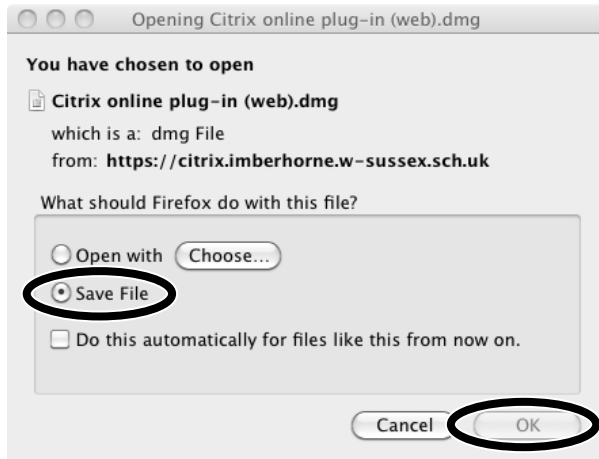


Continued...

# Connecting to Imberhorne Remote Access: Firefox 3.6 on Mac OS X



5) Click "Save File", then click "OK":



6) Double-Click the downloaded file:



7) Double-Click the installer icon:

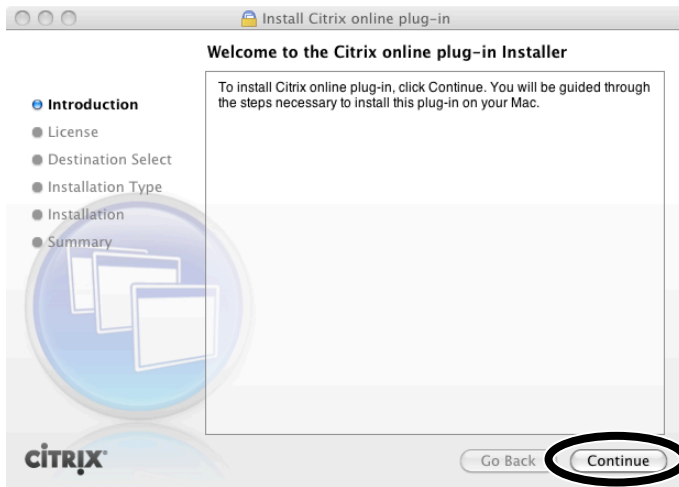


Continued...

# Connecting to Imberhorne Remote Access: Firefox 3.6 on Mac OS X



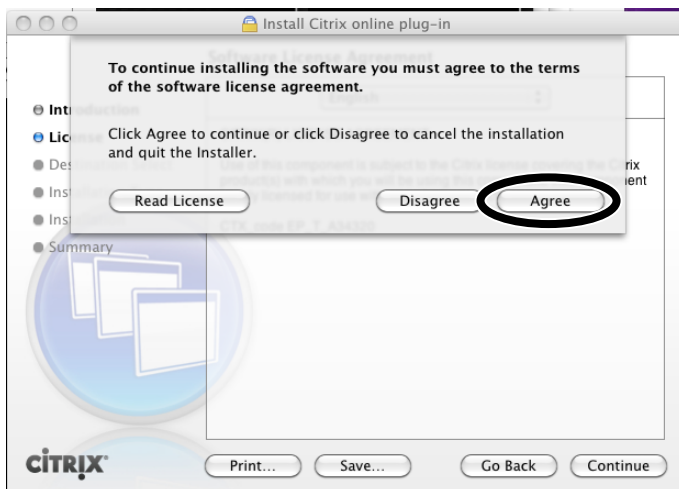
8) Click "Continue":



9) Click "Continue":



10) Click "Agree":



Continued...

# Connecting to Imberhorne Remote Access: Firefox 3.6 on Mac OS X



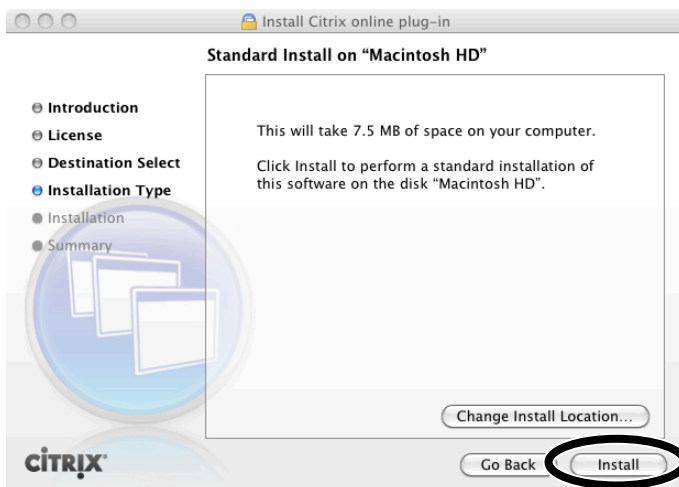
11) Click "Macintosh HD":



12) Click "Continue":



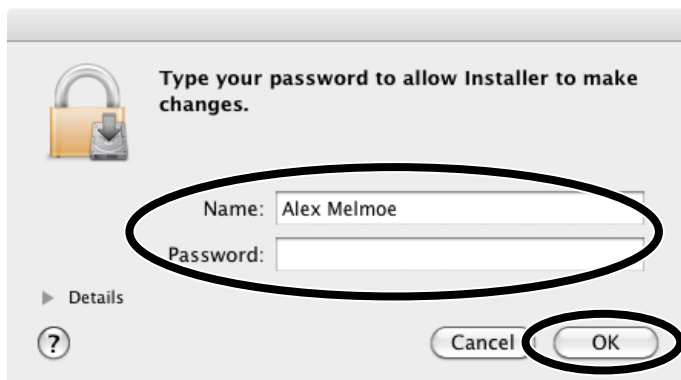
13) Click "Install":



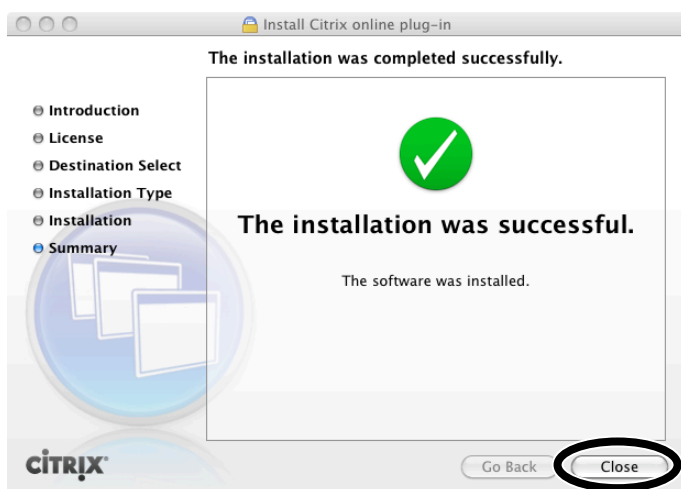
Continued...

## Firefox 3.6 on Mac OS X

14) Enter your **Mac** username and password, and click "OK":



15) Click "Close":



16) Close this window:

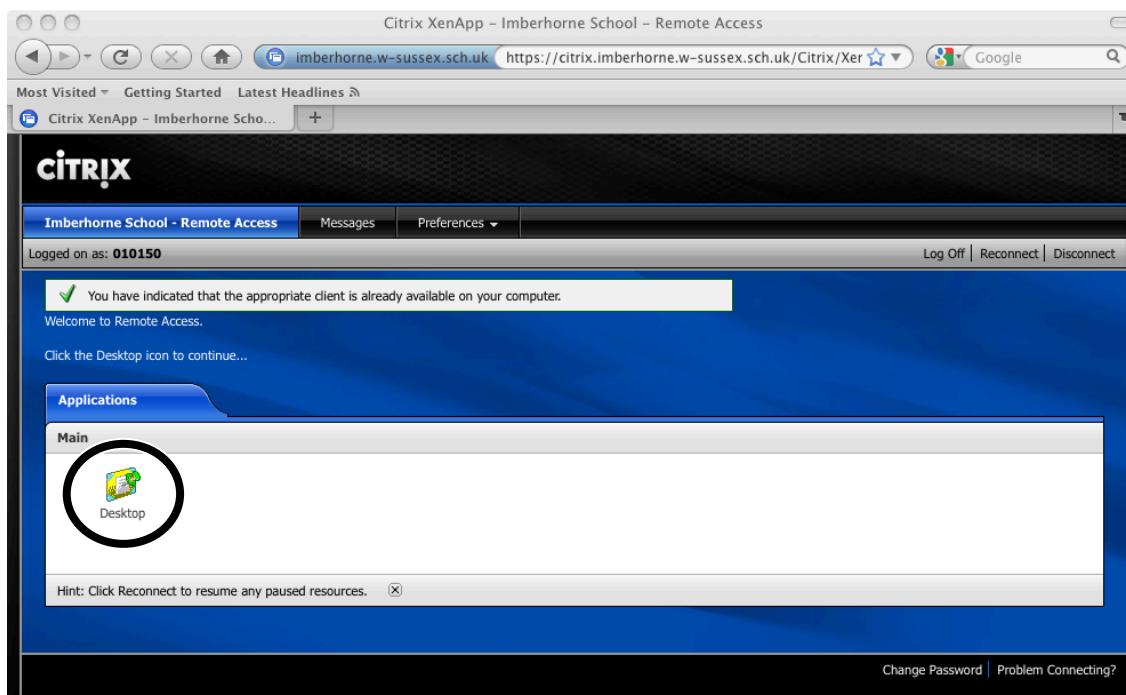


Continued...

# Connecting to Imberhorne Remote Access: Firefox 3.6 on Mac OS X



17) Click the "Desktop" icon:



18) Click "Open":



19) Your computer screen will disappear and you will be logged into the school network. Don't panic – this is what is meant to happen! 😊

20) You are now connected to school! The next time you logon, you will skip from step 3 to step 17 – you only need to install the software once.