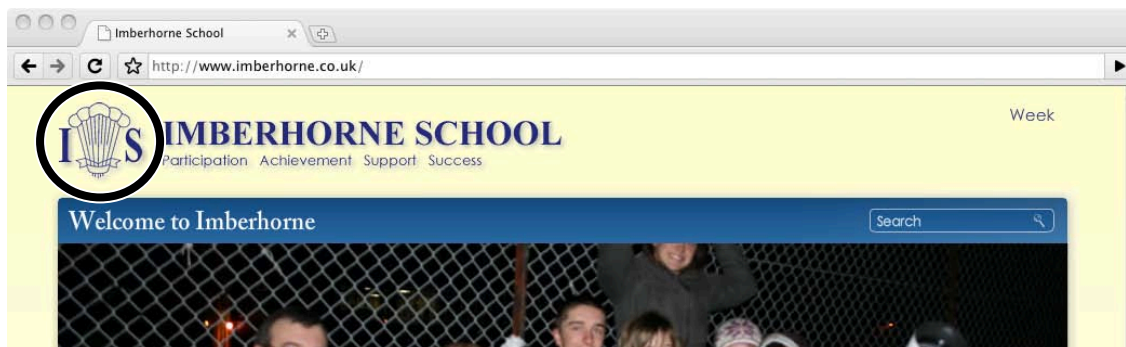


## Connecting to Imberhorne Remote Access:

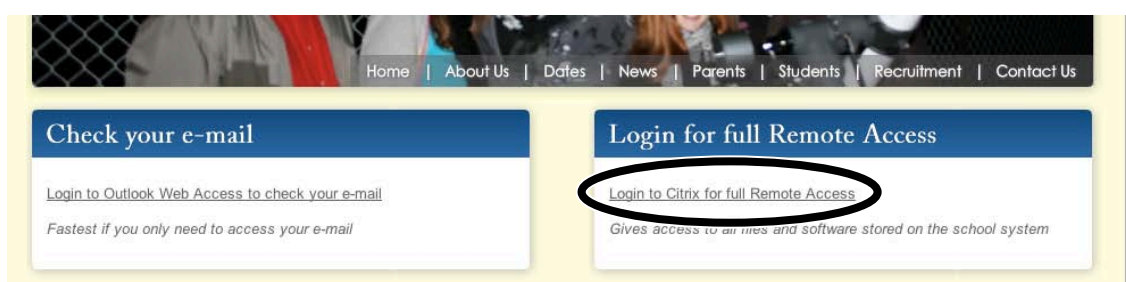
# Chrome 5 on Mac OS X



- 1) Visit the Imberhorne website at [www.imberhorne.co.uk](http://www.imberhorne.co.uk) and click the school logo at the top of the page (or choose "Students", then "Remote Access" on the menu system):



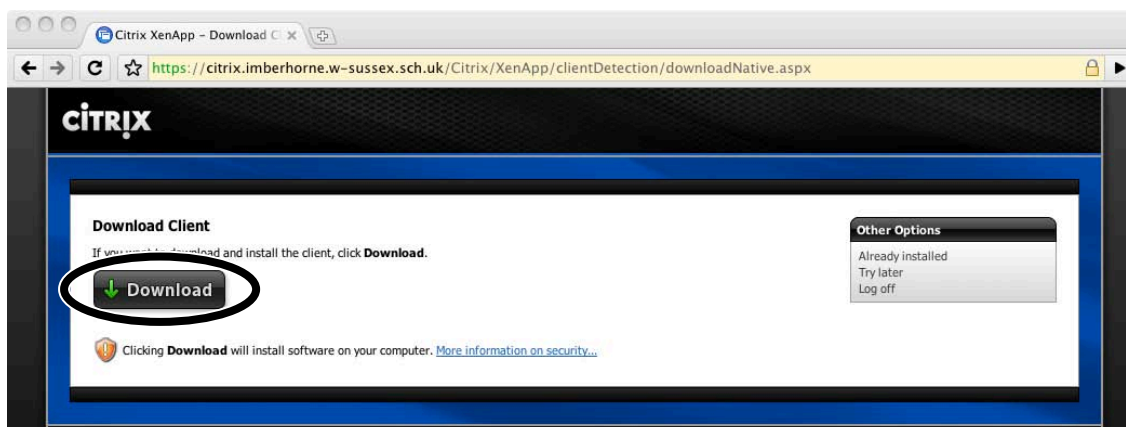
- 2) Click the "Login to Citrix for full Remote Access" link in the right-hand box:



- 3) Enter your school username and password in the "user name" and "password" boxes, then click "Log On":



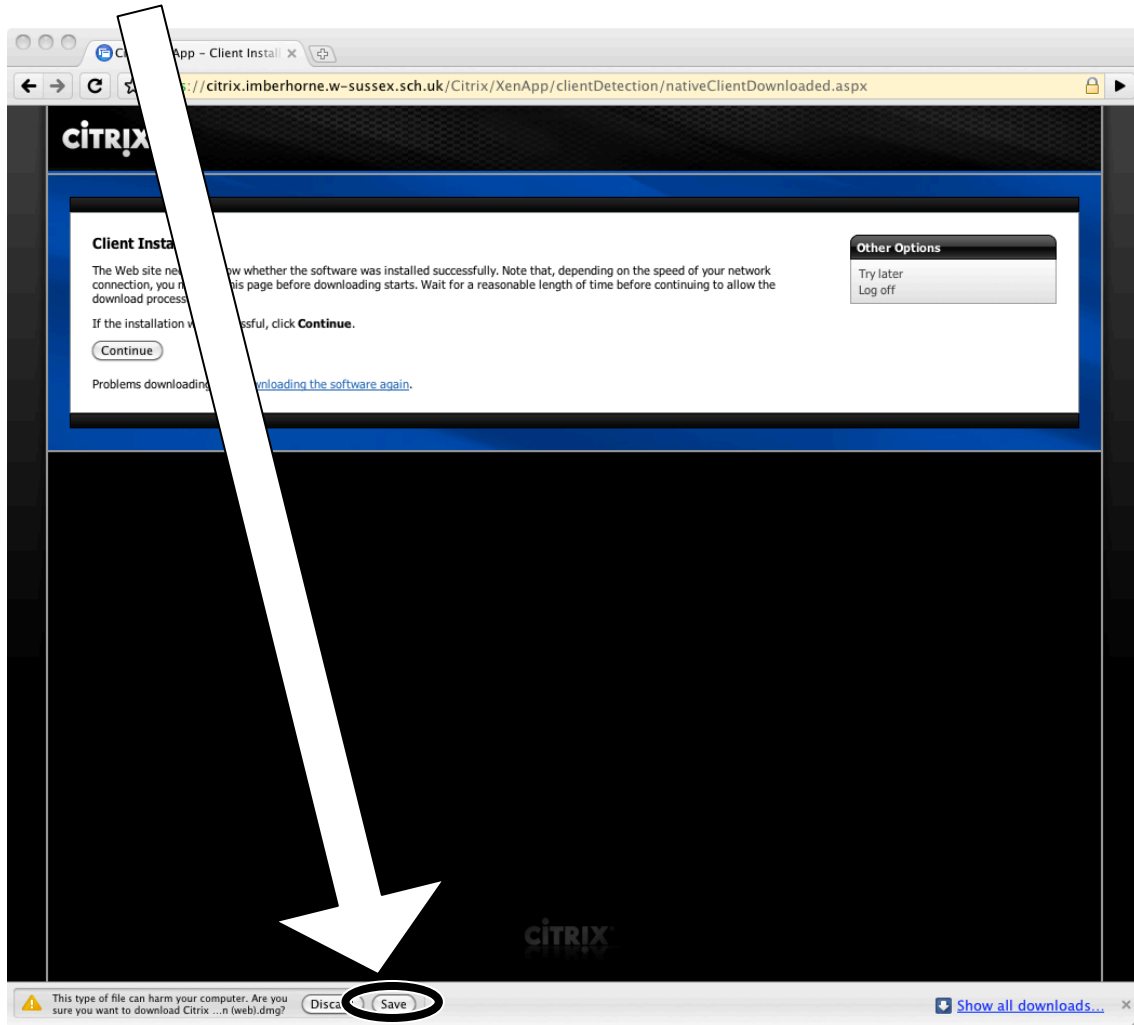
- 4) Click the "Download" button:



Continued...

# Chrome 5 on Mac OS X

5) Click "Save":



6) Click the small arrow at the foot of the screen:



7) Click "Open":

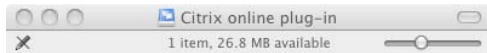


Continued...

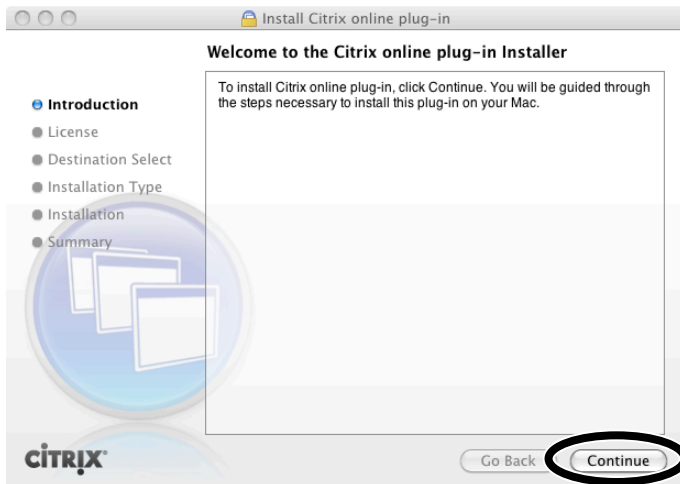
# Connecting to Imberhorne Remote Access: Chrome 5 on Mac OS X



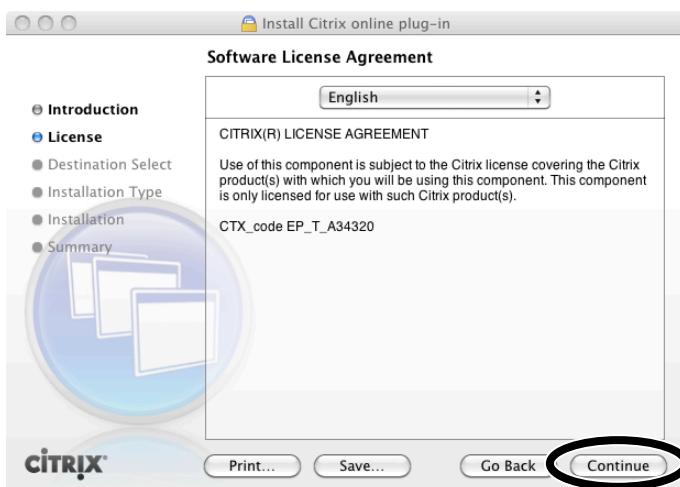
8) Double-Click the installer icon:



9) Click "Continue":



10) Click "Continue":

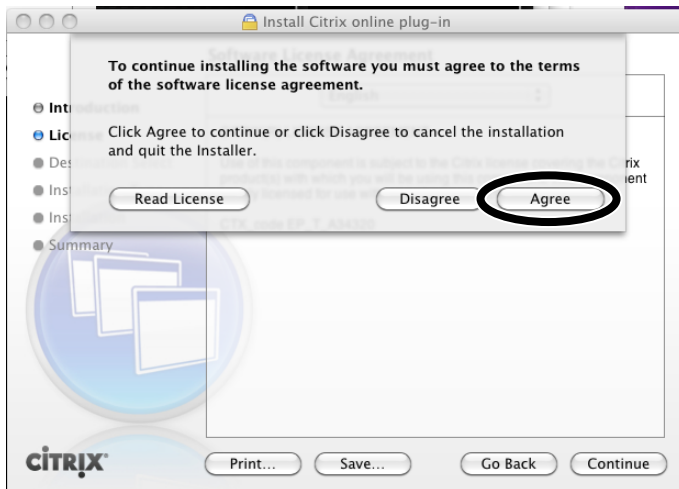


Continued...

# Connecting to Imberhorne Remote Access: Chrome 5 on Mac OS X



11) Click "Agree":



12) Click "Macintosh HD":



13) Click "Continue":

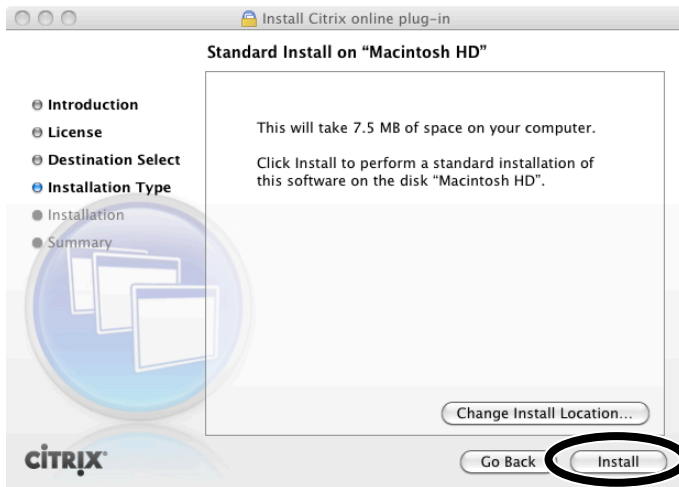


Continued...

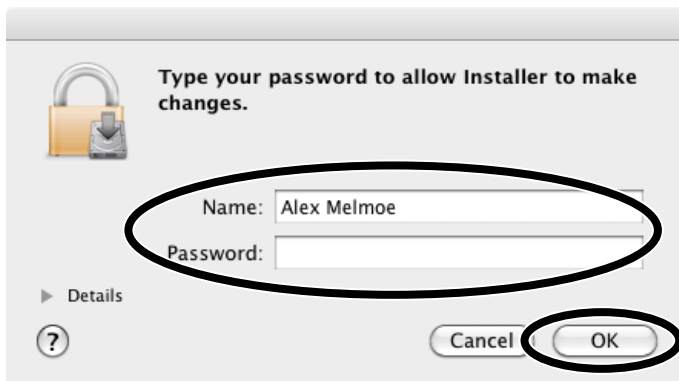
# Connecting to Imberhorne Remote Access: Chrome 5 on Mac OS X



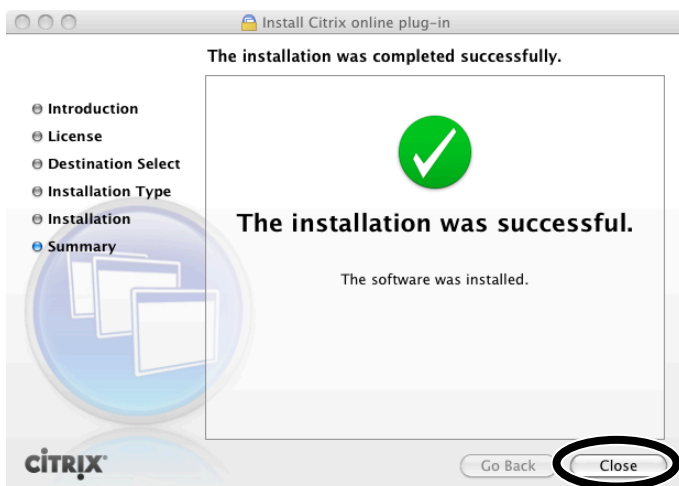
14) Click "Install":



15) Enter your **Mac** username and password, and click "OK":



16) Click "Close":

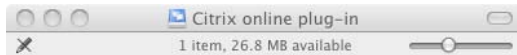


Continued...

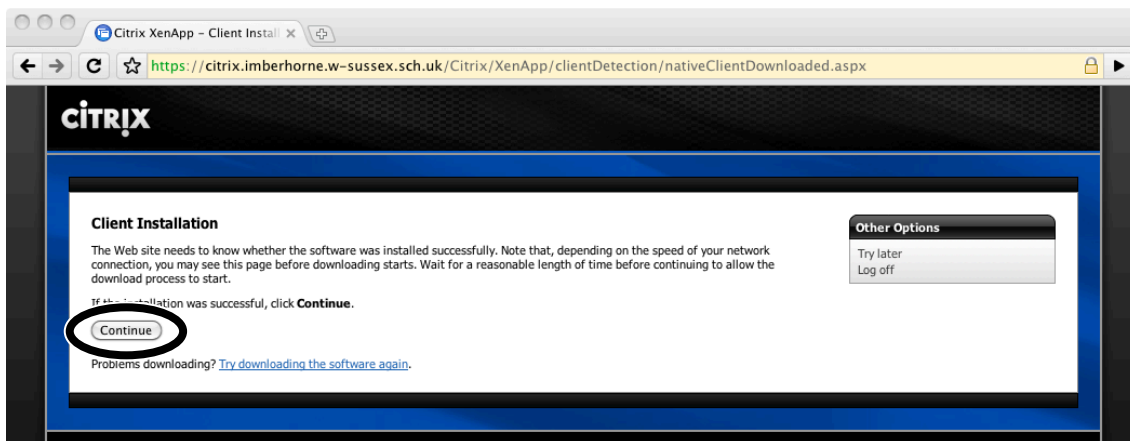
# Connecting to Imberhorne Remote Access: Chrome 5 on Mac OS X



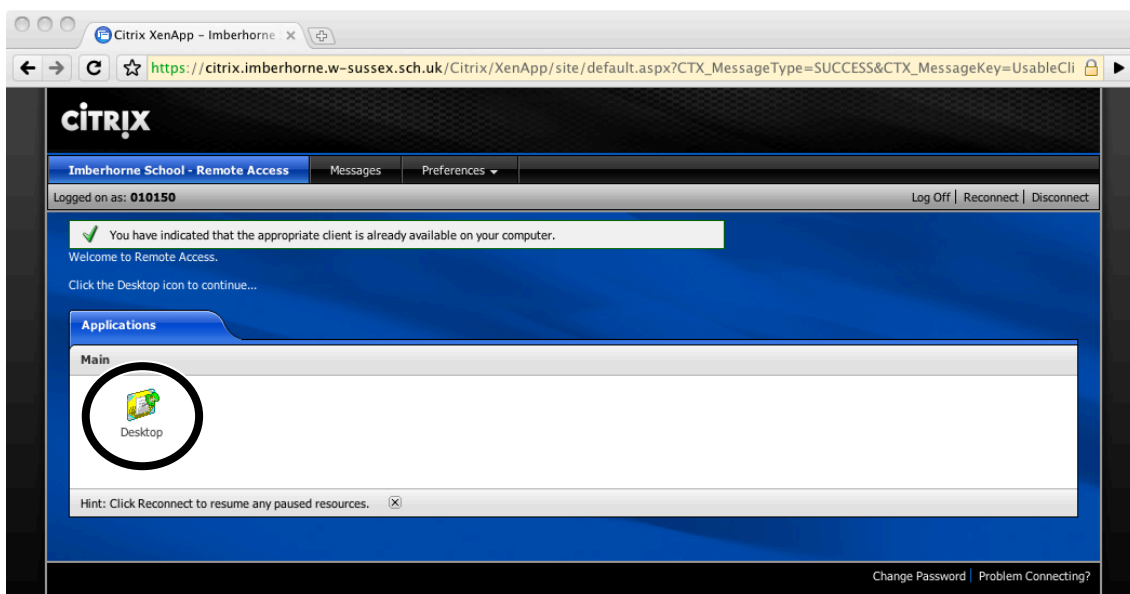
17) Close this window:



18) Click "Continue":

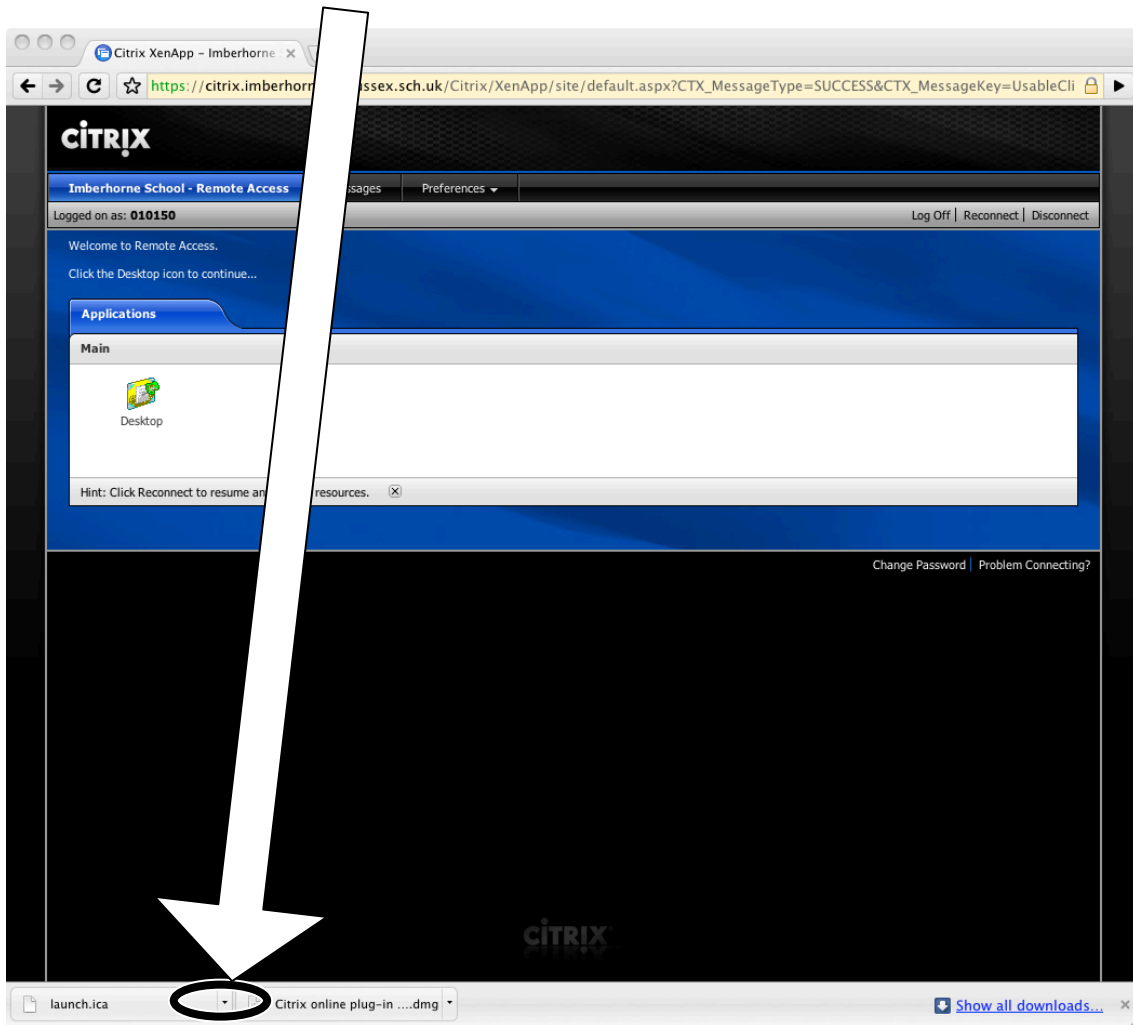


19) Click the "Desktop" icon:

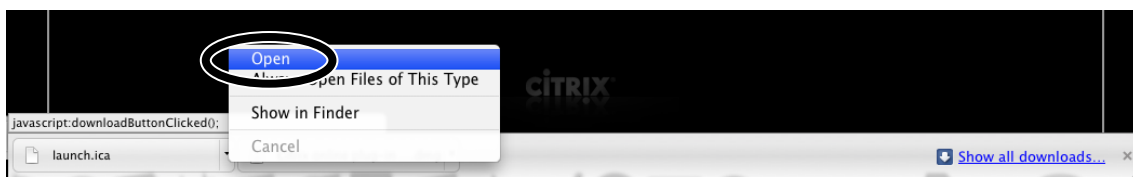


# Chrome 5 on Mac OS X

20) Click the small arrow at the foot of the screen:



21) Click "Open":



22) Click "Open":



23) Your computer screen will disappear and you will be logged into the school network. Don't panic – this is what is meant to happen! ☺

24) You are now connected to school! The next time you logon, you will skip from step 3 to step 19 – you only need to install the software once.