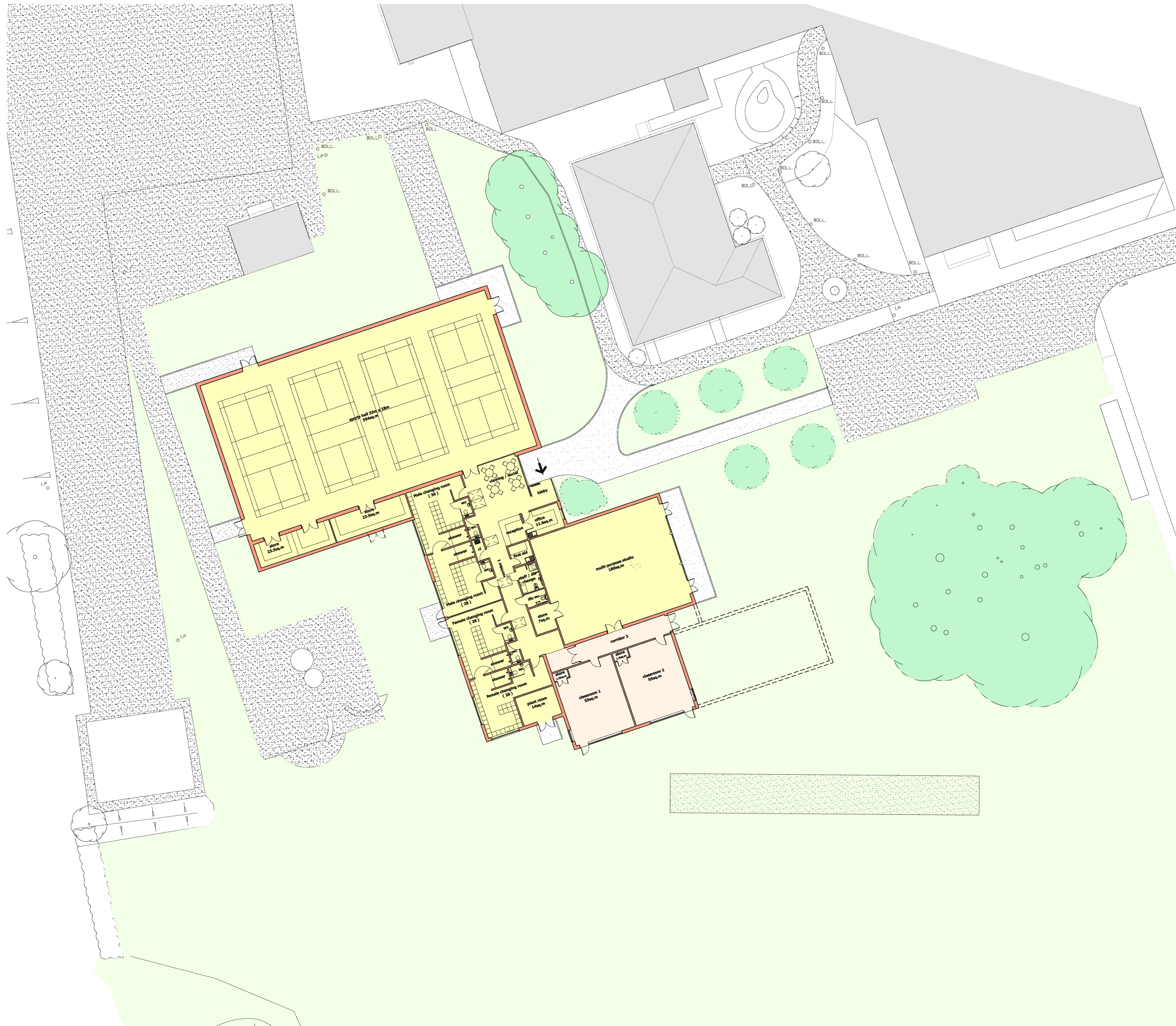


DO NOT SCALE FROM THIS DRAWING EXCEPT FOR PLANNING PURPOSES ONLY.

ALL DIMENSIONS RELATING TO SUB-CONTRACTOR OR SUPPLIERS WORK MUST BE CHECKED ON SITE AND AGREED BETWEEN THE GENERAL CONTRACTOR & THE SUB-CONTRACTORS / SUPPLIERS. ALL DIMENSIONS ARE IN MILLIMETERS. IF IN DOUBT ASK.

ALL WORKS OR MATERIALS INDICATED ON THE DRAWING ARE TO BE TO THE LATEST BRITISH STANDARDS AND ARE TO BE CARRIED OUT IN ACCORDANCE WITH THE RELEVANT CODES OF PRACTICE OR RECOGNIZED TRADE ASSOCIATIONS RECOMMENDATIONS & PUBLICATIONS.

REV.	AMENDMENT	BY	DATE



Project
IMBERHORNE SCHOOL
EAST GRINSTEAD
Drawing
SITE PLAN - OPTION 7

the
SEAMAN
PARTNERSHIP
Ltd

Date: AUGUST 2011
Scales: 1:200
Job No: TSP 402

Drawn by: SCB
Status: Preliminary
Dwg No: FS-101

UNIT 2, MARTINS BARN, BIRDHAM ROAD
CHICHESTER, WEST SUSSEX, PO20 7BX
TEL: 01243 514131 FAX: 01243 511488
office@the-seaman-partnership.co.uk
w.w.w.the-seaman-partnership.co.uk

DO NOT SCALE FROM THIS DRAWING EXCEPT FOR PLANNING PURPOSES ONLY.

ALL DIMENSIONS RELATING TO SUB-CONTRACTOR OR SUPPLIER WORK MUST BE CHECKED ON SITE AND AGREED BETWEEN THE GENERAL CONTRACTOR & THE SUB-CO-TRACTOR(S) SUPPLIERS. ALL DIMENSIONS ARE IN MILLIMETERS. IF IN DOUBT ASK.

ALL WORKS OR MATERIALS INDICATED ON THE DRAWING ARE TO BE TO THE LATEST BRITISH STANDARDS AND ARE TO BE CARRIED OUT IN ACCORDANCE WITH THE RELEVANT CODES OF PRACTICE OR RECOGNIZED TRADE ASSOCIATIONS RECOMMENDATIONS & PUBLICATIONS

REV.	AMENDMENT	BY	DATE



East Elevation



North Elevation



West Elevation



South Elevation

Project:
IMBERHORNE SCHOOL
EAST GRINSTEAD

Drawing:
PROPOSED ELEVATIONS
OPTION 7 - PHASE 1

Date: AUGUST 2011 Drawn by: SCB

Scale: 1:100 Status: Preliminary

Job No: TSP 402 Day No: FS-106

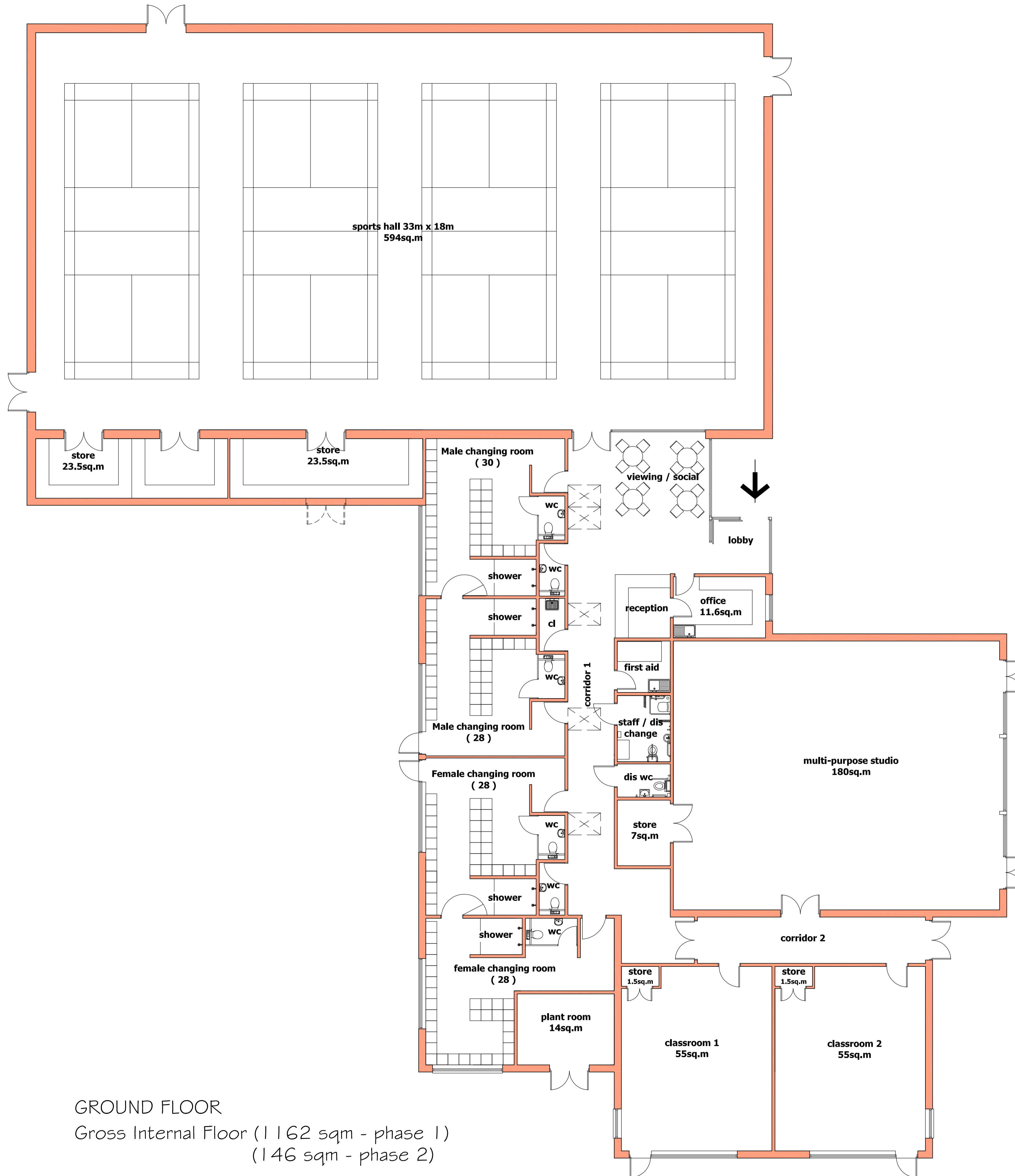
Rev: 1

the
SEAMAN
PARTNERSHIP
Ltd

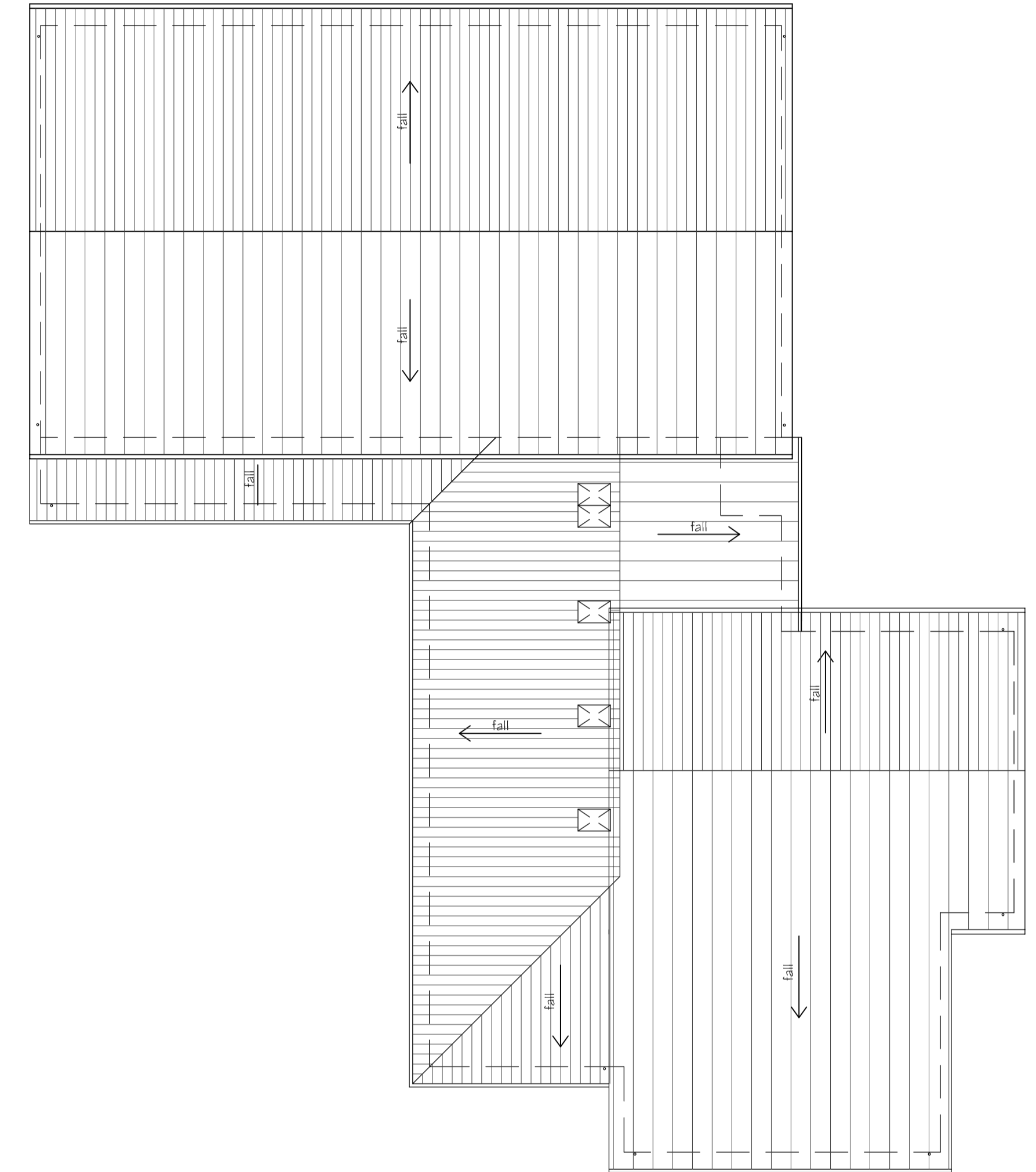
UNIT 2, MARTINS BARN, BIRDHAM ROAD
CHICHESTER, WEST SUSSEX, PO20 7BX
TEL: 01243 514333 FAX: 01243 514488
office@the-seaman-partnership.co.uk
www.the-seaman-partnership.co.uk

DO NOT SCALE FROM THIS DRAWING EXCEPT FOR PLANNING PURPOSES ONLY.
ALL DIMENSIONS RELATING TO SUB-CONTRACTOR OR SUPPLIERS WORK MUST BE CHECKED ON SITE AND AGREED BETWEEN THE GENERAL CONTRACTOR & THE SUB-CONTRACTORS / SUPPLIERS. ALL DIMENSIONS ARE IN MILLIMETERS. IF IN DOUBT ASK.
ALL WORKS OR MATERIALS INDICATED ON THE DRAWING ARE TO BE TO THE LATEST BRITISH STANDARDS AND ARE TO BE CARRIED OUT IN ACCORDANCE WITH THE RELEVANT CODES OF PRACTICE OR RECOGNIZED TRADE ASSOCIATIONS RECOMMENDATIONS & PUBLICATIONS

REV.	AMENDMENT	BY	DATE



GROUND FLOOR
Gross Internal Floor (1162 sqm - phase 1)
(146 sqm - phase 2)



Project
IMBERHORNE SCHOOL
EAST GRINSTEAD

Drawing
PROPOSED PLAN
Option 7 - Phases 1 & 2

Date: JULY 2011
Status: 1:100 / 200
Job No: TSP 402

Drawn by: SCB
Status: Preliminary
Dwg No: FS-28

the
SEAMAN
PARTNERSHIP
Ltd

UNIT 2, MARTINS BARN, BIRDHAM ROAD
CHICHESTER, WEST SUSSEX, PO20 7BX
TEL: 01243 514131 FAX: 01243 511488
office@the-seaman-partnership.co.uk
w.w.w.the-seaman-partnership.co.uk